

eurolaser

Partner for your success.

Innovative laser system engineering Compact overview



Discover the fascinating world of laser technology.

Specialists in laser systems for cutting, engraving and marking

eurolaser designs, develops and produces innovative laser systems for material machining in industry and craftwork.

With a multiplicity of potential uses, the Lüneburg-based company has established a position showing the way ahead for new and established laser applications in many sectors of industry.

Business overview

- Advertising industry
- Architecture
- Membrane switches and electronic industry
- Automotive industry
- Filter technology
- Furniture manufacturing and interior
- Labelling and lettering
- Medical industry
- Clothing industry
- Wood handcraft and musical instruments
- Packaging industry
- Toys
- University, Research, Prototyping
- and much more



Acrylic



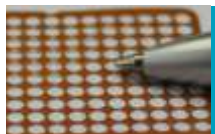
Wood



Textiles



Foils



Additional



LASER CUTTING SYSTEMS

The basis for your success

Our powerful laser systems are designed for use in both craftwork and industry.

The modular construction with high-quality components guarantees quality for the most demanding applications.

- Nearly maintenance-free sealed-off CO₂ laser
- Software independent and license-free
- Available for upgrades by modular conception
- Maintenance of value by highest quality
- Cost transparency
- Approved moving system by world market leader ZÜND



M-800
Shuttle Table System



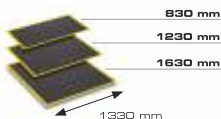
XL-1600



L-3200 Conveyor

A variety of processing areas tailored to your applications

M-Line



■ M-800

Processing area: 52.3" x 32.6" (4.3' x 2.7')
Laser power: 60 to 400 W

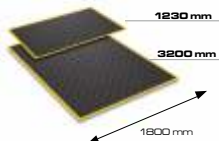
■ M-1200

Processing area: 52.3" x 48.4" (4.3' x 4')
Laser power: 60 to 400 W

■ M-1600

Processing area: 52.3" x 64.2" (4.3' x 5.3')
Laser power: 60 to 600 W

L-Line



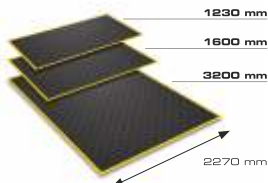
■ L-1200

Processing area: 70.8" x 48.4" (5.9' x 4')
Laser power: 60 to 400 W

■ L-3200

Processing area: 70.8" x 126" (5.9' x 10.4')
Laser power: 60 to 600 W

XL-Line



■ XL-1200

Processing area: 89.3" x 48.4" (7.4' x 4')
Laser power: 60 to 600 W

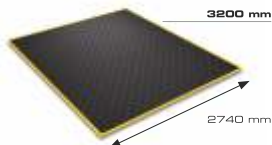
■ XL-1600

Processing area: 89.3" x 63" (7.4' x 5.2')
Laser power: 60 to 600 W

■ XL-3200

Processing area: 89.3" x 126" (7.4' x 10.4')
Laser power: 60 to 600 W

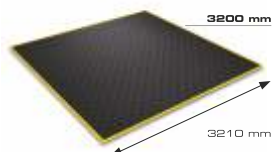
2XL-Line



■ 2XL-3200

Processing area: 107.8" x 126" (8.9' x 10.4')
Laser power: 60 to 600 W

3XL-Line



■ 3XL-3200

Processing area: 126.3" x 126" (10.5' x 10.4')
Laser power: 60 to 600 W

Automated systems and options

Customized automated systems improve the efficiency and commercial viability of laser cutting systems.



Shuttle Table System

This enables loading and unloading of the machining table during laser machining and demonstrably delivers an increase in efficiency of up to 75% when using a laser system.



Remote Operation

The software-controlled division of the work area allows laser system operation on alternate sides. This enables production to be continued on the opposite side while removing and reloading material.



Conveyor System

By using this automatic material feed, textiles can be fed for laser cutting directly from the roll and routed after laser cutting to a table extension.



Functional principle of the Conveyor system

System options

A multitude of options extend the applications and simplify everyday jobs.



POSITION plus

The optical recognition system enables printed materials to be cut out precisely along the printed outline. Even copying tolerances in the printed format can be compensated by software control.



PICTURE plus

This optional raster engraving unit allows machining of image files and production of both 2D-images and 3D-reliefs. Engraving is possible with a resolution of up to 1200 dpi and in 256 shades of grey.



3 in 1

Mechanical Machining

Use the laser plus two mechanical tools in parallel on one machine. The entire high-quality range of Zünd tools is available for you. Extend your machining and material options without expensive additional investments.



Bevels



Milling grooves



Mitre cuts and V-grooves



Counterbores and blind holes

**We will gladly advise you in person
- free of charge and non-binding.**

Issued by:

eurolaser GmbH
Borsigstraße 18
21339 Lüneburg
Germany

Telephone

+49 (0) 4131 9697-500

Fax





+49 (0) 4131 9697-555

E-Mail

sales@eurolaser.com

Internet

www.eurolaser.com
www.eurolaser.tv

 www.facebook.com/eurolaser
 www.youtube.com/user/elhmovie
 www.goo.gl/ceJRX
 www.flickr.com/photos/eurolaser